

An aerial photograph of Strasbourg, France, showing the dense urban landscape and the prominent Strasbourg Cathedral. The Ill river is visible on the left side of the image. The text 'Visiting Strasbourg' is overlaid on the center of the image.

# Visiting **Strasbourg**

1 month-programme to discover the city and the surroundings

# Summary

**01** Presentation of the Grand Est region

**02** Presentation of Strasbourg

**03** The areas

**04** The must-see Cathedral of Notre-Dame

**05** The museums

**06** The out of the ordinary

**08** Contact

# The Grand Est region

Located in the heart of Europe, the Grand Est region comprehends 3 subregions: Champagne Ardenne, Lorraine and Alsace.

The Grand Est is surrounded by 4 other countries: Belgium, Luxembourg, Germany and Switzerland.

The region is also renowned for its forward-looking, innovative sectors in chemistry, digital technology, healthcare, metallurgy and engineering.



Map of France's regions, Campus France  
<https://www.campusfrance.org/en/tourism-visit-regions-France>

# The city of Strasbourg




**Strasbourg is an eclectic, people-oriented and European city!**

Strasbourg is the capital of the Grand Est region and a European capital being the seat of several European institutions such as the Council of Europe, the European Parliament and others.

People get around mainly by public transport (6 streetcar lines and 39 bus lines) or bicycle. Strasbourg has the largest cycling network in France and one of the largest in Europe!

In 2020-2021, Strasbourg welcomed nearly 86.000 students of whom between 10% and 20% coming from outside of France.

Some big cities outside of Strasbourg that are directly linked by train you can do on your own:

max / min (°F) 

Jun. 73,4° / 55,4°

Jul. 78,8° / 57,2°

caution: these are averages, some summers can be very hot, with temperatures over 86°F !



Strasbourg	1h50	Paris
Strasbourg	1h30	Nancy
Strasbourg	1h20	Bâle (Switzerland)
Strasbourg	1h20	Stuttgart (Germany)



Strasbourg also has its own airport (8 min away from the train station!)

# The areas



## the Petite France

### main places to see:

- The Place Benjamin Zix
- The Pont du Faisan also called the Pont tournant
- The Ponts couverts
- The Vauban dam



## the European district

### main places to see:

- The European Parliament
- The Council of Europe
- The European Court of Human Rights
- The European Ombudsman



## the Neustadt district

### main places to see:

- The Place de la République
- The Palace of the Rhine
- The Lycée des Pontonniers
- The St. Paul's Church



# The must-see Cathedral of Notre-Dame



A Gothic art edifice finished in 1439 (free visit)

**2 things to do:** the Astronomical clock (free visit)  
the Platform (€5 for students)

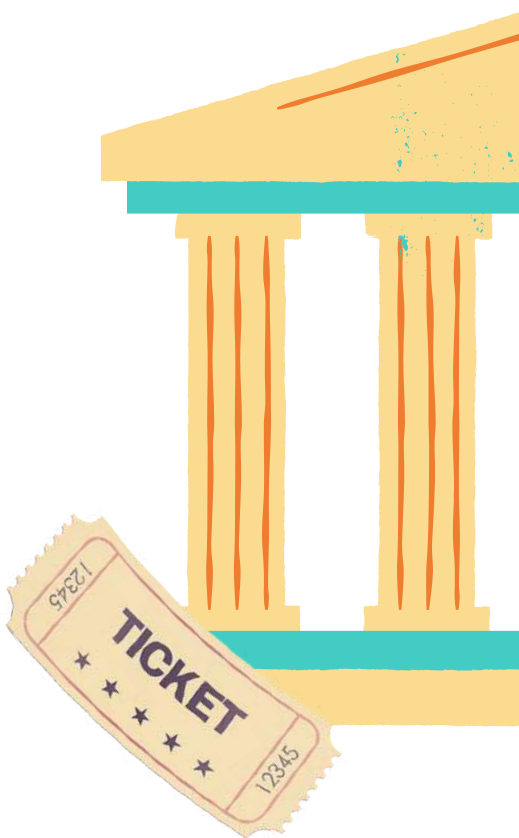


# The museums



The museums of Strasbourg are all free with the "Carte Culture" sticker which is on your University of Strasbourg student card, see the list of museums below:

<https://en.musees.strasbourg.eu/>



# The out of the ordinary

## A tourist river boat



With Batorama

Strasbourg Grand-Ile tour: €11.50 for 45 min

Other tours:  
<https://www.batorama.com/en/circuits>

## A canoe ride

With Strasbourg Eaux-Vives

Tour de l'Aar: €20 for 2 hours and 45 min

Other tours:  
<https://www.strasbourgeauxvives.org/site/>

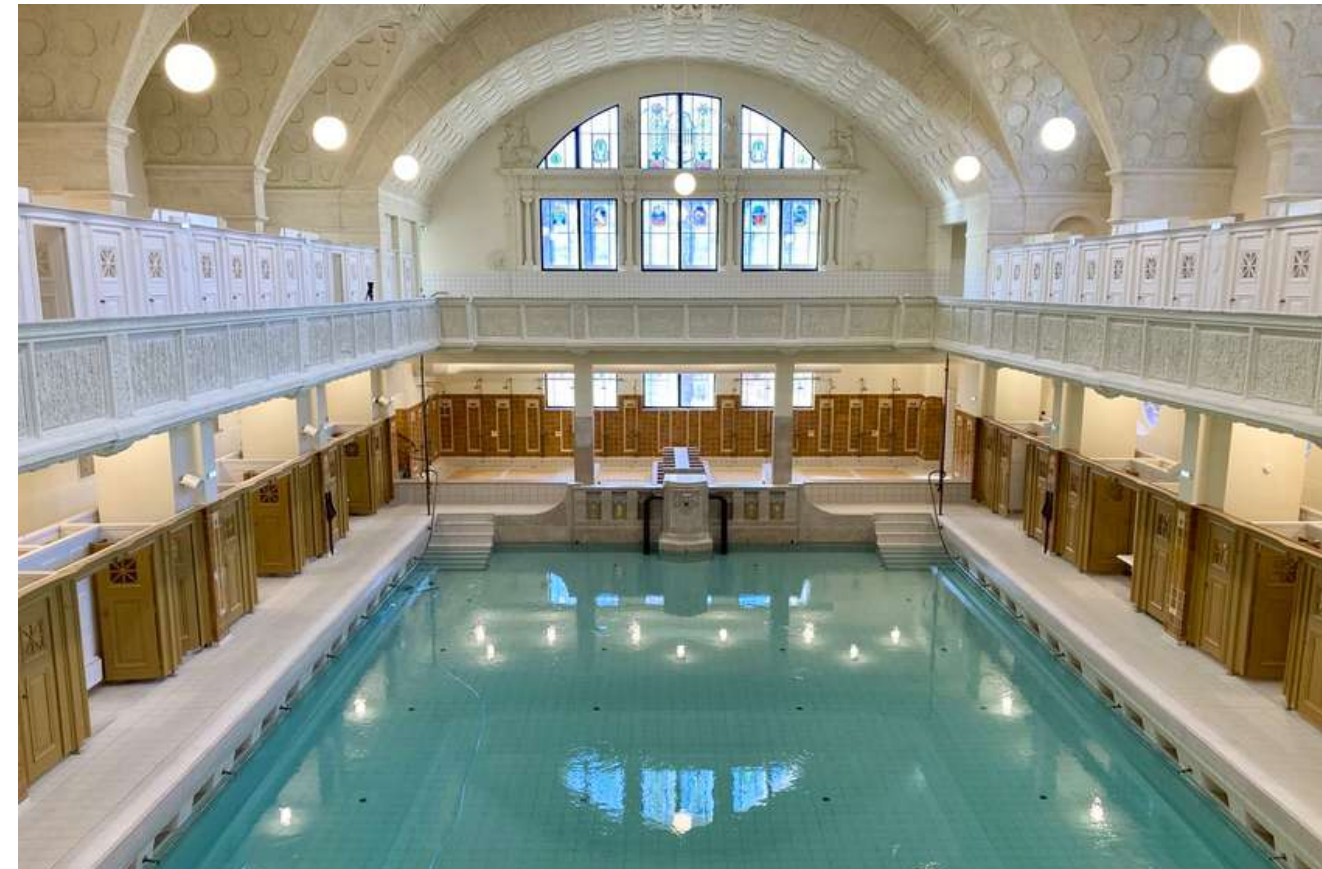


## Municipal baths

"Bains municipaux"

Aquatic area: €5.30

Other activities in this place:  
<https://www.bainsmunicipauxdestrasbourg.fr/activites/>





# The out of the ordinary (outside of Strasbourg)

## A theme park



### Europapark in Germany

**1 day:** €57.50 (ticket online)

<https://tickets.mackinternational.de/en/ticket/1-day-admission-ticket-europapark>

**Bus line 271 from the train station of Strasbourg:** €8 round-trip ticket

<https://www.ctbr67.fr/lignes-saisonnieres/europa-park-2/>

## A 15th-century mountain fortress



### The Haut-Koenigsbourg castle in Orschwiller

€7 for students

**How to access:** take the train to Sélestat (€20 round-trip ticket), then take the shuttle to the castle from the train station of Sélestat (€5 round-trip ticket)

# Contact

## International relations department of ENGEES:

Sandra NICOLLE - Department director - [sandra.nicolle@engees.unistra.fr](mailto:sandra.nicolle@engees.unistra.fr) - +33 (0) 3 88 24 82 16

Christian BURLETT - International relations assistant - [christian.burlett@engees.unistra.fr](mailto:christian.burlett@engees.unistra.fr) - +33 (0) 88 24 82 15

An aerial photograph of a city, likely Brno, Czech Republic, featuring a prominent Gothic cathedral (St. Peter and Paul Cathedral) with a tall spire. A river (Svitava) flows through the city, with several bridges crossing it. The city is densely packed with buildings, and the background shows rolling hills under a clear sky. The text "Enjoy your stay!" is overlaid in the center of the image.

Enjoy **your stay!**